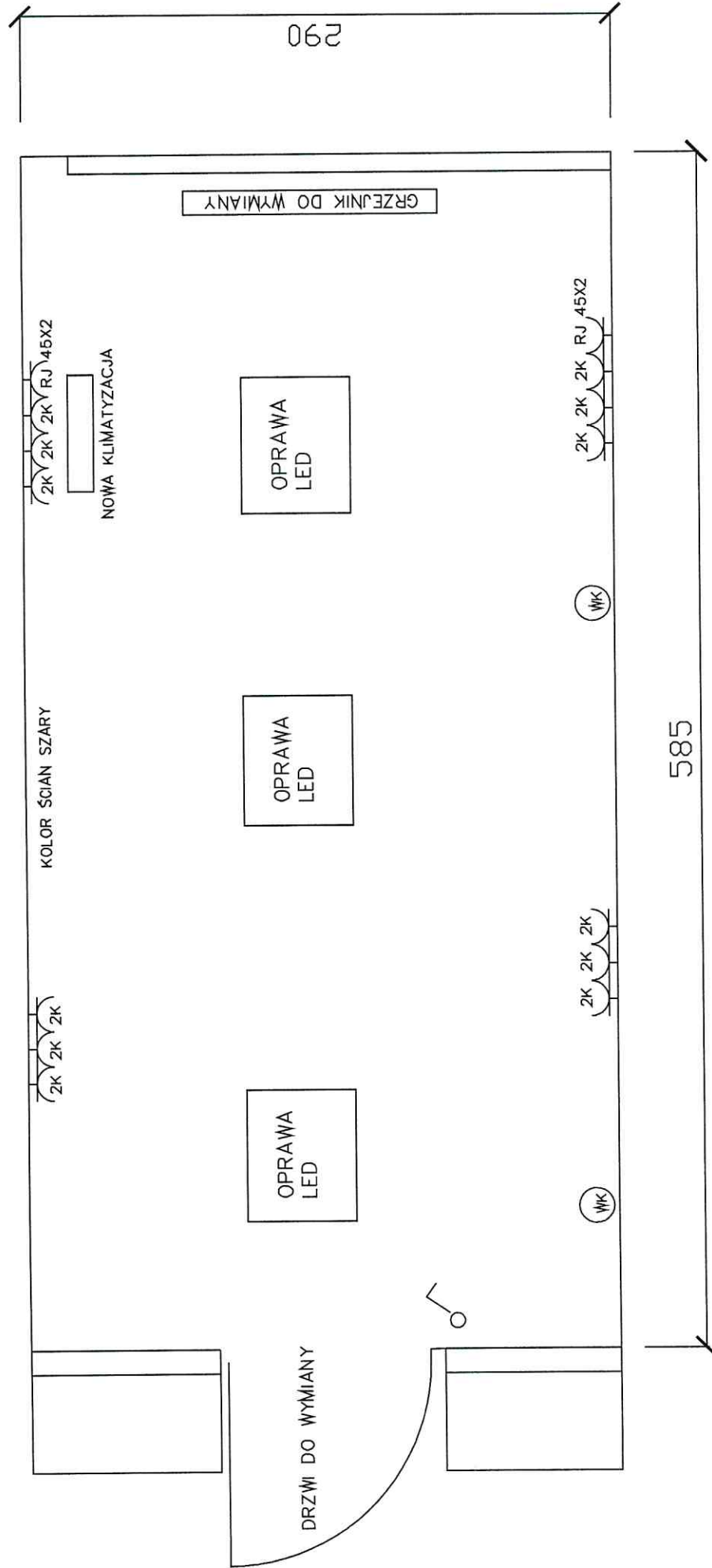
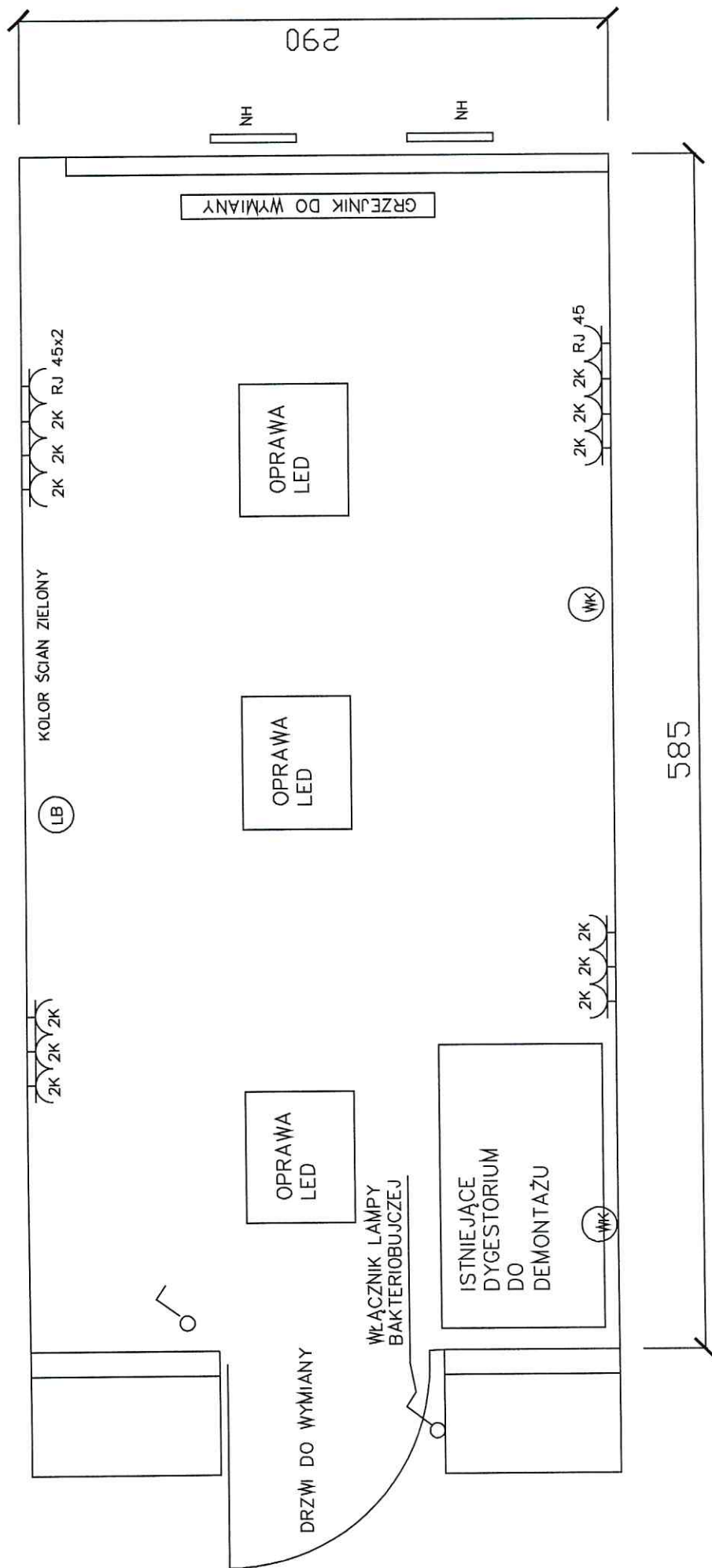


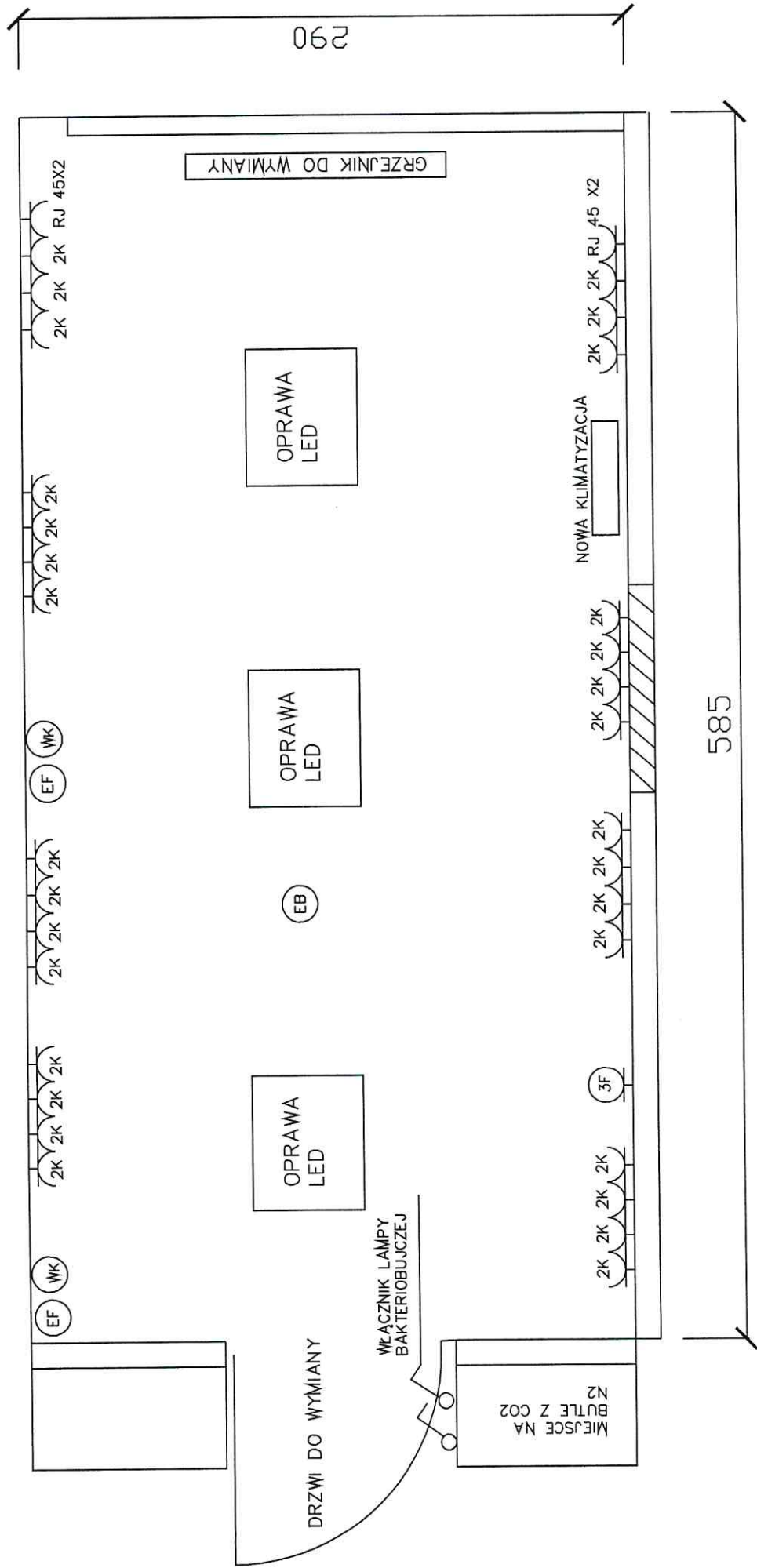
# POMIESZCZENIE 208



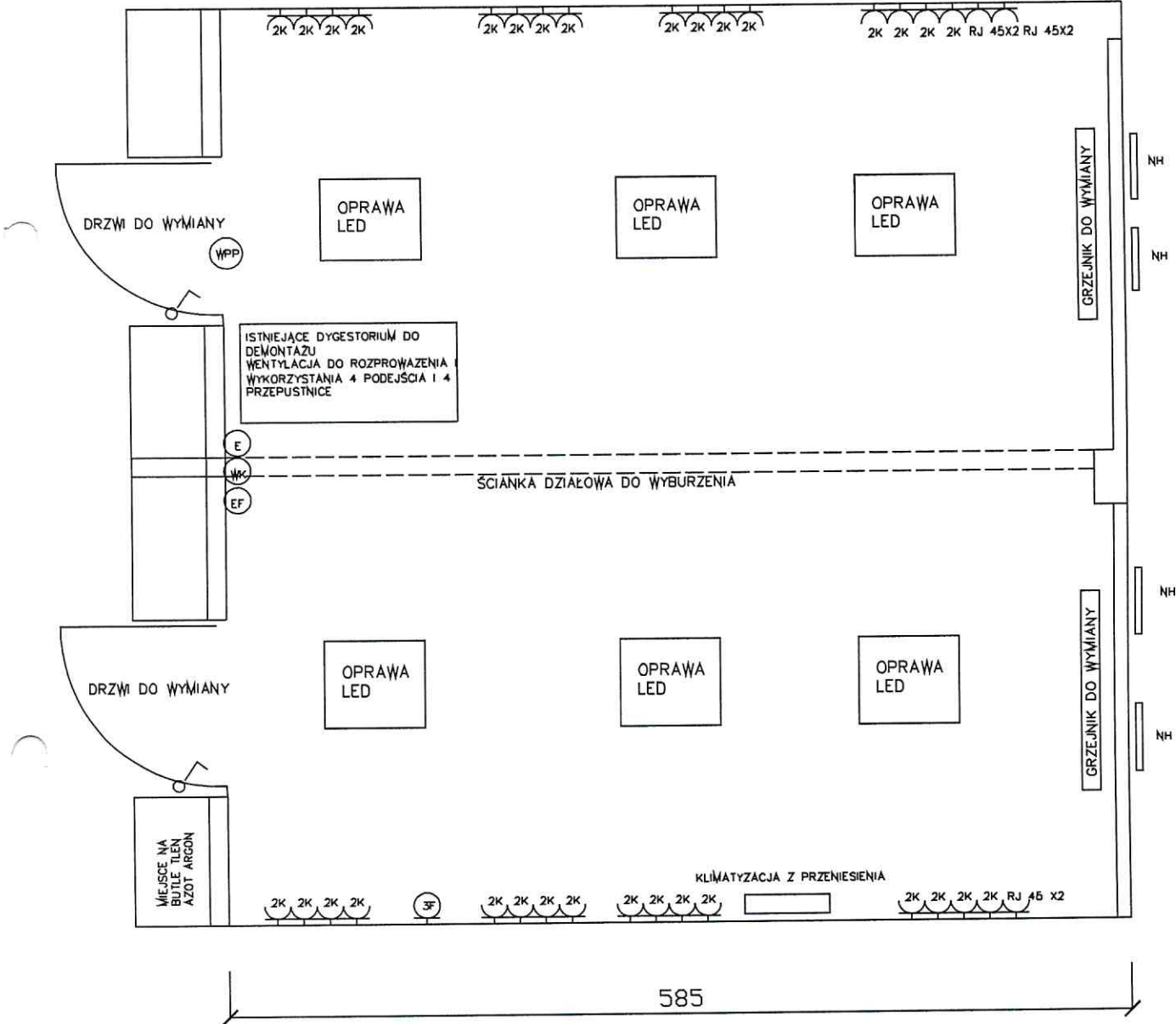
# POMIESZCZENIE 210



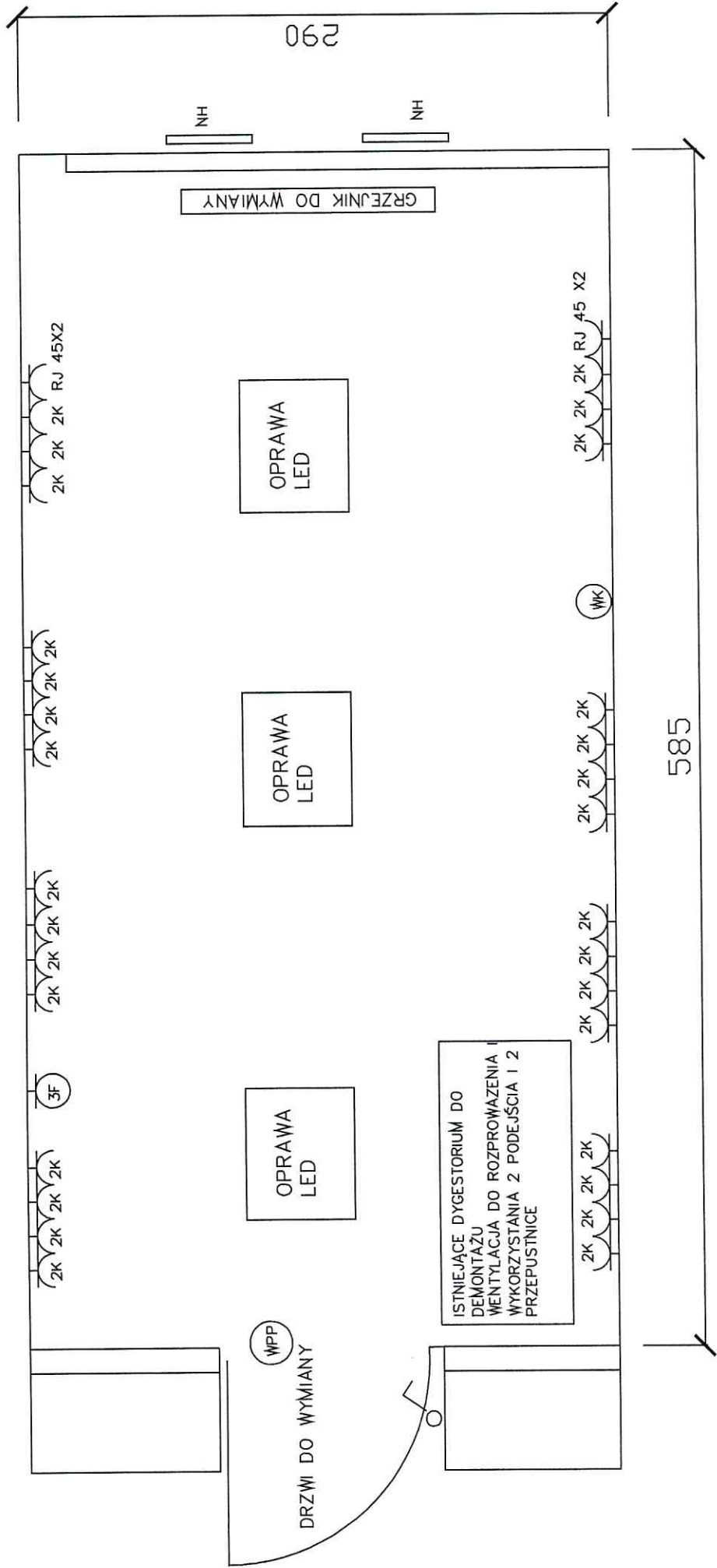
# POMIESZCZENIE 217



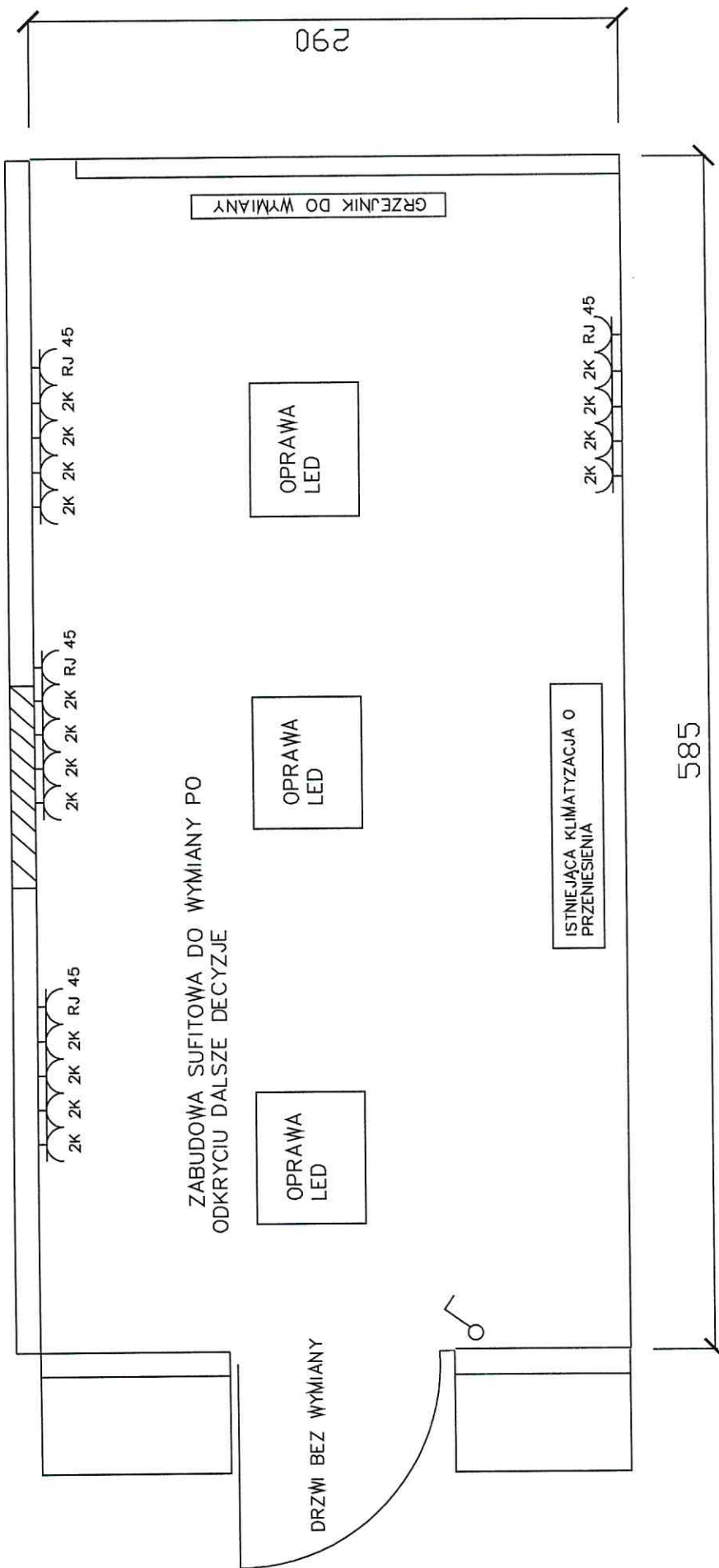
# POMIESZCZENIE 218 219



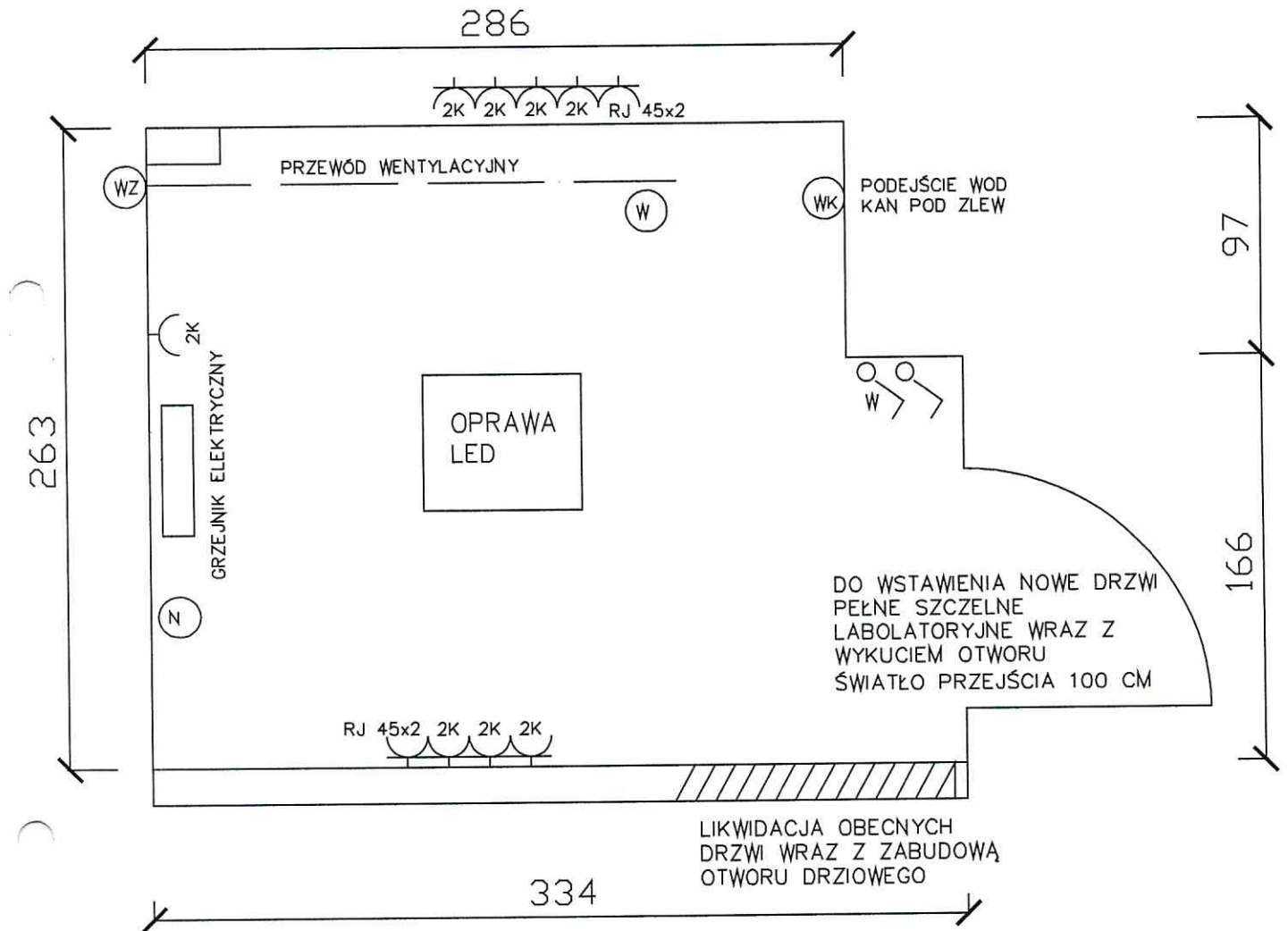
# POMIESZCZENIE 220



# POMIESZCZENIE 221



# POKÓJ CIEPŁY

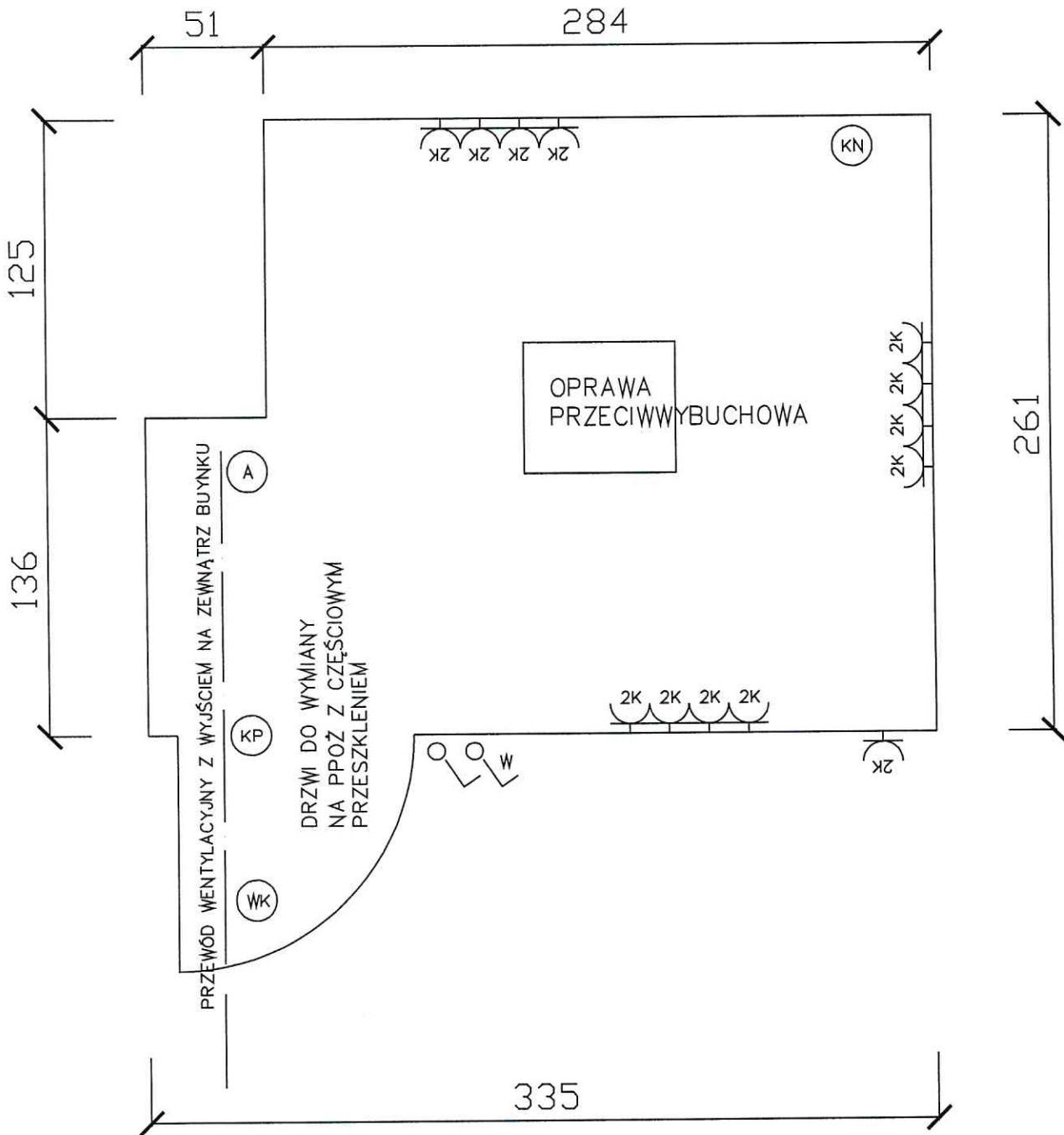



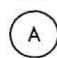




- (WZ) WYRZUTNIA ŚCIENNA ZEWNĘTRZNA
- (N) NAWIETRZAK ŚCIENNY
- (W) WENTYLATOR ŚCIENNY NA PRZEWODZIE WENTYLACYJNYM

RJ 45x2 GNIAZDO INTERNETOWE PODWÓJNE

(2K) GNIAZDO PODWÓJNE

# POKÓJ CIEPŁY

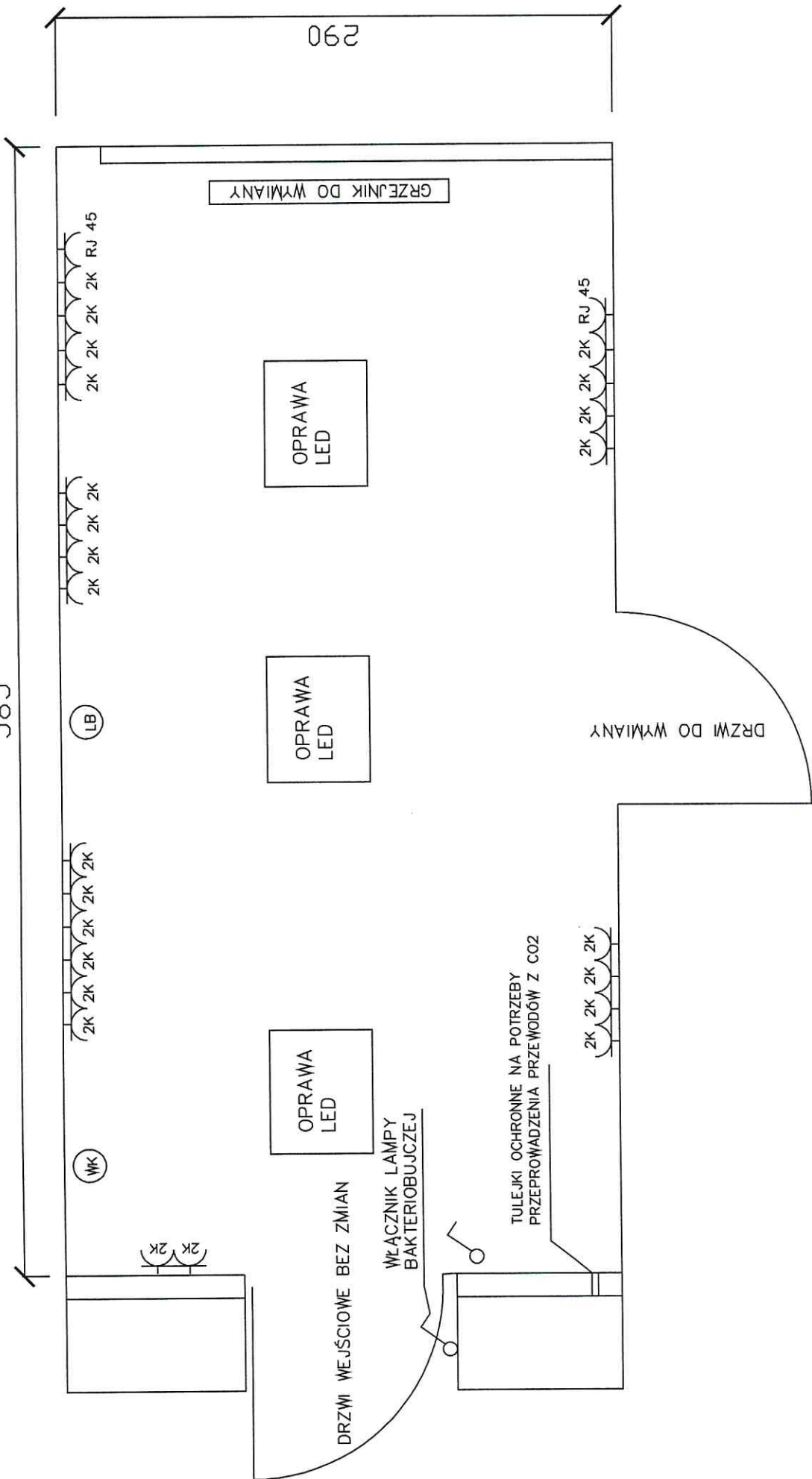


-  KRATKA ŚCIENNA PRZECIWOŻAROWA
-  ANEMOSTAT (KRATKA WYWIEWNA REGULOWANA)
-  KLAPA PPOŻ
-  WENTYLATOR KANAŁOWY W ZABUDOWIE GK
-  GNIAZDO PODWÓJNE IP44
-  WŁĄCZNIK OŚWIETLENIA I WENTYLATORA

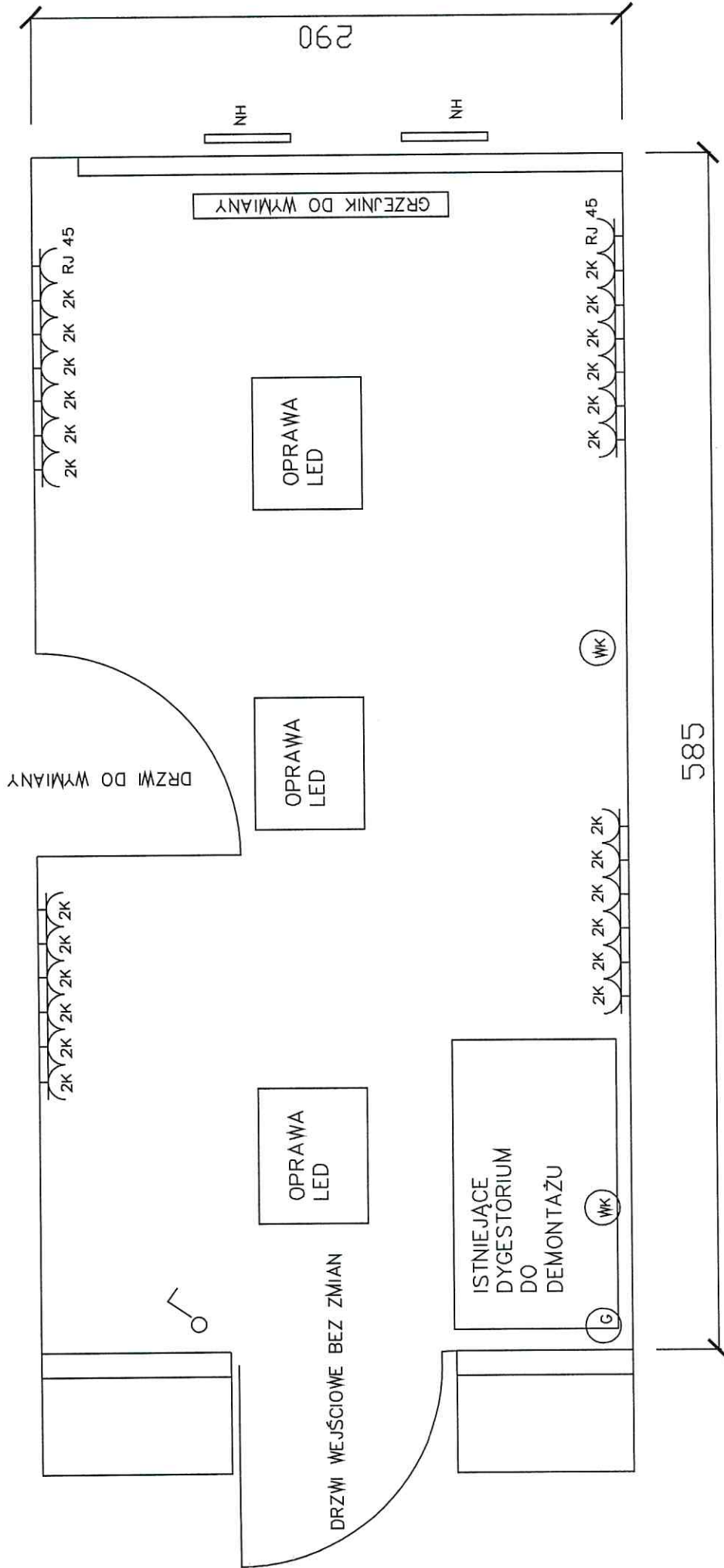


# POMIESZCZENIE 409

585



# POMIESZCZENIE 410



# POMIESZCZENIE 421

